

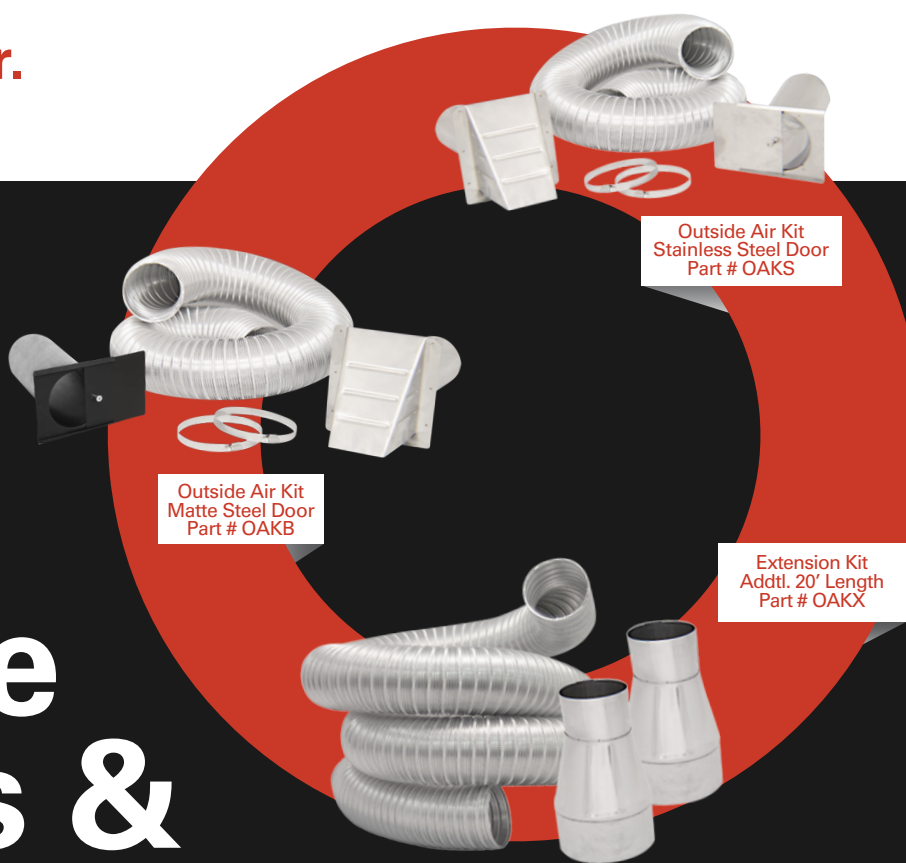
NEW

Outside Air Kits & Accessories

ECO-STEEL AIR INTAKE KITS are designed for use with Isokern® fireplaces which burn wood, liquid propane, or natural gas. They assist your Isokern® fireplace in burning more evenly and help prevent back draft smoking, caused by negative pressure from tightly sealed homes.

FEATURES INCLUDE:

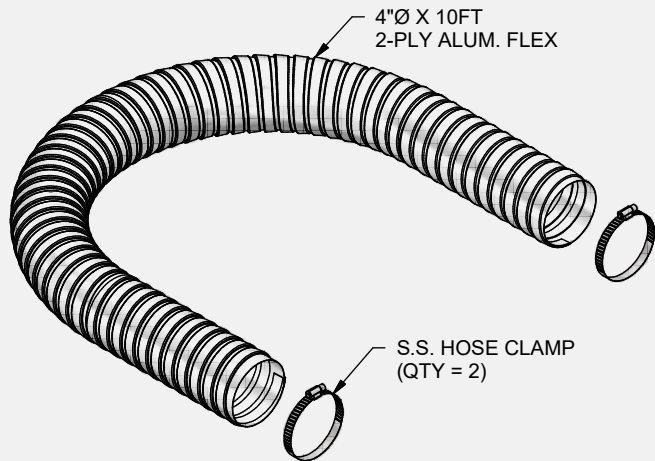
- Durable 2-Ply aluminum alloy flexible liner for increased strength.
- Trouble-Free "Easy Slide" door gives easy access.
- Improved water resistance & minimal installation time.



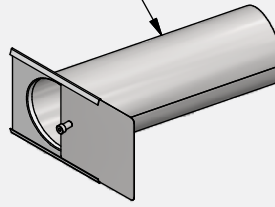
Outside Air Kit Stainless Steel Door Part # OAKS

NOTES:

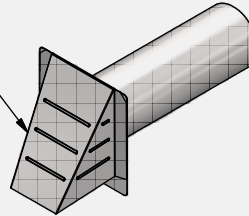
1. KIT PACKAGED IN PLAIN BROWN CARTON WITH 4"x6" WH
2. CARTON SIZE APPROX.: 17" x 17" x 12"
3. FLEX WILL BE COMPRESSED TO FIT IN CARTON.



S.S. DOOR ASSY.



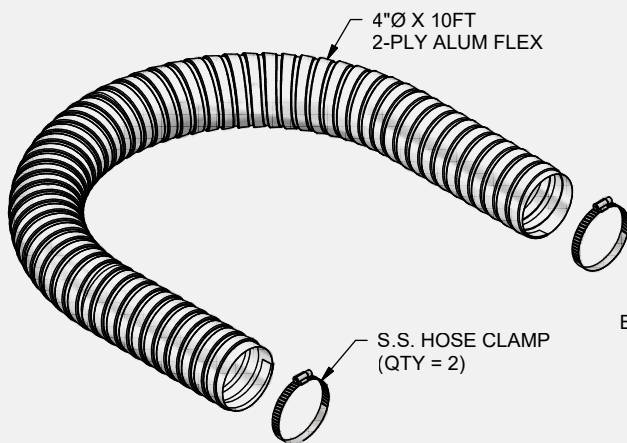
S.S. EXTERIOR
HOOD ASSY.



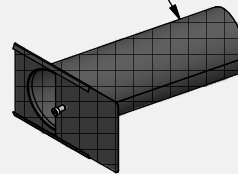
Outside Air Kit Matte Steel Door Part # OAKB

NOTES:

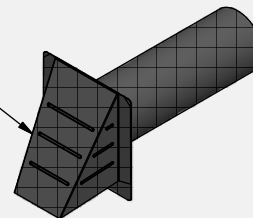
1. KIT PACKAGED IN PLAIN BROWN CARTON WITH 4"x6" WH
2. CARTON SIZE APPROX.: 17" x 17" x 12"
3. FLEX WILL BE COMPRESSED TO FIT IN CARTON.



BLACK DOOR ASSY.



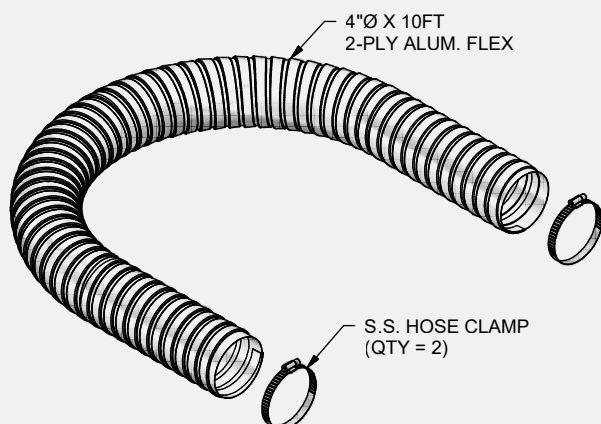
BLACK EXTERIOR
HOOD ASSY.



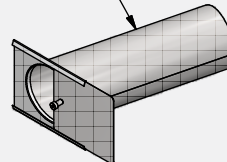
Extension Kit Addtl. 20' Length Part # OAKX

NOTES:

1. KIT PACKAGED IN PLAIN BROWN CARTON WITH 4"x6" WH
2. CARTON SIZE APPROX.: 17" x 17" x 12"
3. FLEX WILL BE COMPRESSED TO FIT IN CARTON.



S.S. DOOR ASSY.



S.S. EXTERIOR
HOOD ASSY.

